

# TRANSFER SYSTEMS

CAM INDEXING SOLUTIONS  
FOR PARTS TRANSFER

INDEXING TABLES

ROTARY RINGS

LINEAR FEEDERS

ROTARY UNIONS

# INDEXING TABLES

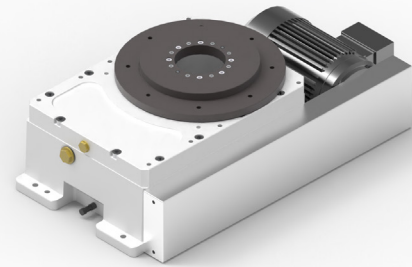
## Cam indexers for rotary tables

This mechanism enables intermittent rotary transfers to be carried out to the most demanding standards in terms of speed and stopping precision. MCPI indexing tables use a principle of movement based

on the kinematics of cams. This technology ensures smooth, gradual movement, regardless of the load being moved and the transfer speed.



- Compact assembly
- Reliability
- Speed
- Simplicity of use
- Long life
- Easy integration



### Standard range:

- 2 to 24 positions

- Table diameter up to 3,000 mm
- Precise positioning up to  $\pm 20''$   
(to be specified depending on the application)

	M 15	T 25	T 35	T 50	T 55
Max. load [kg]	50	100	250	500	1000
Max. inertia [kg.m <sup>2</sup> ]	3	8 / 4 (> 16 pos.)	40 / 20 (> 12 pos.)	250 / 150 (> 8 pos.)	800 / 400 (> 8 pos.)
Max. table diam. [mm]	600	800	1200	2000	3000
Unit dimensions L x W x H [mm]	210 x 150 x 80	240 x 195 x 116	286 x 180 x 113	460 x 300 x 168	460 x 300 x 168

## Motor positions available (depending on the model)



## Options

<b>Control module</b>  Secure and improve performance	<b>Rotary joint integration</b>  For controlling your actuators	<b>Fixed central support</b>  For installing your tools	<b>Fastening plate</b>  Easy indexer integration	<b>Other options on request</b> 
---	---	---	--	-------------------------------------

# LINEAR

# FEEDERS & TRANSFER SYSTEMS

## Linear sliding rail

This transfer solution **exclusive to MCPI** causes products to “slide” along a surface, driven by rapid, low-amplitude oscillating movements. The products move very regularly, appearing not to touch the surface supporting them.

These movement characteristics enable certain products to be moved while others are held or accumulated, staying in the same position, on a single surface, without them tipping over or colliding.

These properties, unique to the MCPI linear transfer system, make it an essential link in your production chain, preserving your products and managing their flow through the manufacturing process.

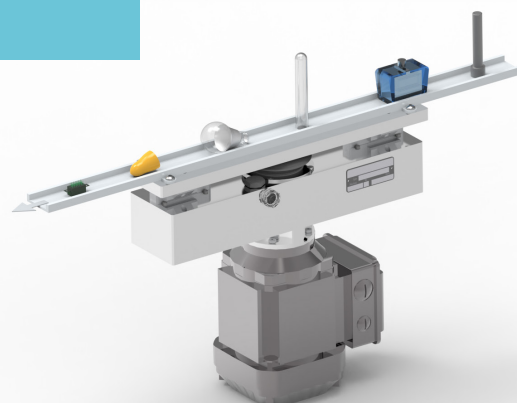
This technology is also remarkably robust, and requires very little maintenance.

MCPI guides you through the design and integration of the system, testing the machinery with your products. The MCPI linear transfer system is available in two sizes.



MCPI  
EXCLUSIVE  
INNOVATION

- Parts slide smoothly
- Single-direction movement
- Adjustable speed of travel
- Easy integration
- Robust technology



	R 70	R 90
Max. mass of products transferred [kg]	3	10
Max. mass of onboard tooling [kg]	1.4 to 3.4 depending on cams	2.3 to 9 depending on cams
Travel speed [mm/sec.]	25 to 75	30 to 170
Number of speed settings	3	14
Mechanism dimensions L x W x H [mm]	260 x 95 x 279	394 x 130 x 329
Max. length of support rail [m]	1.5	3

## Options

- Motor type
- Hygienic version
- Fastening plate dimensions
- ATEX version

# ROTARY RINGS

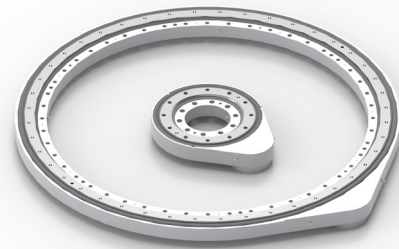
## Rotary indexing rings

These rings supplement the indexer range for heavier loads. They deliver greater flexibility of movement thanks to their programmable kinematics.

MCPI offers a ready-to-use, preconfigured, tested, proven solution.



- Compact integration
- Freely configurable kinematics
- Precise positioning
- Dynamic movement
- Robust solution



### Standard range:

- Unlimited number of positions
- Table diameter up to 6,000 mm
- Precise positioning up to  $\pm 20''$   
(to be specified depending on the application)

	A30	A60	A80	A110
Max. load [kg]	5,000	8,000	12,000	15,000
Max. inertia [kg.m <sup>2</sup> ]	3,000	10,000	25,000	50,000
Max. table diameter [mm]	3,000	4,000	5,000	6,000
Central bore [mm]	145	472	672	1022

## Other features

Motor positions	Pinning	More precise positioning	Ready-to-use solution	ATEX
Parallel or perpendicular	Easy tool positioning	Self-adjusting Anti-backlash gears	<ul style="list-style-type: none"> <li>- Chassis</li> <li>- Inverter</li> <li>- Encoder</li> <li>- Cable length</li> <li>- Electrical cabinet</li> <li>- Table</li> </ul>	For environments subject to explosion risk

# ROTARY UNIONS & ELECTRIC SLIP RINGS

## Pneumatic ~ Hydraulic ~ Electric

MCPI's unions and slip rings enable fluids, gases and electric currents to flow between fixed supply points and reception points attached to a rotating system.

MCPI has developed a very wide range of complete solutions and can help you with specific applications.



- Reliability
- Adaptability
- Compactness
- Robustness
- Versatility

### Pneumatic and/or hydraulic transfer

MCPI rotary unions enable the efficient transmission of energy in fluid or gaseous form (compressed air, vacuum, oil, water etc.) to power your moving actuators and grippers. Service pressures range up to 9 bar for pneumatic connections, -0.95 bar for vacuum and 50 bar for hydraulics.

The hub of the indexing table is an ideal point for energy to pass through, and MCPI has developed connecting parts for its unions to make integration easier. We can also offer custom solutions.



### Electric slip rings

These components allow electric currents and digital signals to pass between fixed points and points rotating at speeds of up to 12,000 rpm. There is a wide range of transmission possibilities, from low currents to currents of up to 200 A. Data can be communicated with all the common protocols – Profibus, Profinet, Ethernet, CAN bus, CAN open etc. – using suitable protected connectors.



### Hybrid rotary unions

For more advanced applications, these unions incorporate all the functions presented. MCPI has developed complete solutions incorporating rotary unions and electric slip rings.



Rotary unions	
Range	JRN
Number of ports	1 to 12
Port diameter	3 or 8 mm
Maximum speed	Up to 500 rpm
Central bore	8 to 30 mm

Electric slip rings	
Range	JRCO
Number of ports	1 to 120
Current	1 to 200 A
Maximum speed	Up to 12,000 rpm
Central bore	Up to 300 mm





## THIRTY YEARS OF INDEXING EXPERTISE

MCPI has been developing its expertise in manufacturing indexing tables, electromechanical rings, rotary unions, electric slip rings and linear feeders for 30 years.

We offer custom solutions and responsive technical assistance thanks to our dedicated organization. Our experienced technicians are skilled in feasibility studies, mechanical design and automation, assembly and fine tuning.

Our success is based on understanding your need, taking your project in hand immediately and following through with an attentive, enthusiastic team.

**From concept to finished product, MCPI delivers simple or complex projects for industrial customers in a wide variety of sectors.**



Research and development office for transfer systems



Manufacture, assembly and marketing of turnkey solutions



High quality, precision equipment tailored to your specific needs



Made in **France**



**30 years**  
of experience



**40%**  
of revenue  
from export sales



bases in  
**33 countries**

**MCPI: 15 rue des Étoiles – BP1013 – 74 960 Annecy – France**

**+ 33 (0)4 50 33 90 20**

**mcpimail@mcpi.fr**

**www.mcpi.fr**



Follow MCPI's news on LinkedIn